



Olympus Service Manual

CONTENTS

PAGE

3	Daily checks.....	3-3
3.1	Daily safety checks	3-3
3.2	Daily safety check - safety light curtain.....	3-22
3.3	Warning labels.....	3-23



This page intentionally left blank



3 Daily checks

It is important that your machine is kept in good working order.

The following Daily safety checks must be carried out on a Dennis Eagle Ltd. Refuse Collection Vehicle to confirm the correct operation of the machine, its controls, safety circuits and interlocks, in addition to checks specified in the chassis-cab manufacturer's and waste container lifting device manufacturer's service information, before it commences service.

The same checks should also be carried out by service personnel whenever scheduled maintenance service procedures and inspections are carried out or if a major repair is made to the bodywork or it's operating systems.

Make sure that there is no mechanical damage or wear evident in the refuse mechanism, especially in the pivoting and locking of the tailgate to the body.

Any problems must be reported to supervision immediately.

3.1 Daily safety checks

1. Stand the vehicle on clean, level and stable ground with sufficient clearance to allow for the tailgate and waste container lifting device, if fitted, to be fully raised.
2. Engage the parking brakes.
3. Select Neutral 'N'.
4. Stop the engine.
5. Turn the 'Body main' switch to the Off position. Remove and retain the key.



6. Switch the ignition off. Remove and retain the key.
7. Lock all cab doors. Remove and retain the keys.
8. Walk around the Refuse Collection Vehicle and:
 - Make sure that there is no refuse, paper or flammable materials near the engine or exhaust. These could cause a fire when the engine is started. If necessary, tilt the cab (see Chassis-cab Manufacturer's Operator's Handbook) to make a thorough inspection.

- Visually check level of oil in hydraulic oil tank. The float in the bottom sight glass should be at the top of the sight glass. If the level is below this report to supervision immediately and do not proceed any further with the daily inspection.



- Visually check for obvious damage to lamps, warning beacons, reflectors and lenses and bodywork.
 - Check that all marking plates and warning instruction labels are complete, clean, clearly visible and readable (see '3.3 Warning labels' on page 3-23).
 - Visually check underneath (BUT DO NOT GO UNDERNEATH THE VEHICLE) the Refuse Collection Vehicle for evidence of hydraulic oil leaks from the body system hydraulic pipes.
 - Visually check the electrical harnesses and connections, hoses, pipes and other components for obvious signs of defects.
9. Arrange for an assistant to observe the operation of body systems and lamps from a safe viewpoint at the rear of the vehicle.
 10. Enter the Refuse Collection Vehicle cab.
 11. Check that all the emergency tools, equipment and fire extinguisher are present.
 12. Check that the first aid kit is complete.

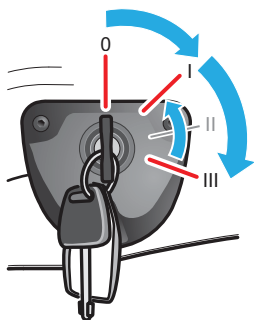


DAILY CHECKS

3

13. Switch the ignition on only, do not start the engine.

- The control screen should initialise and then display the 'Body system off' mode.



2748-DS029-OL1-D-GB-G2

14. Switch on all the vehicle lamps, including fog lamps (if fitted).

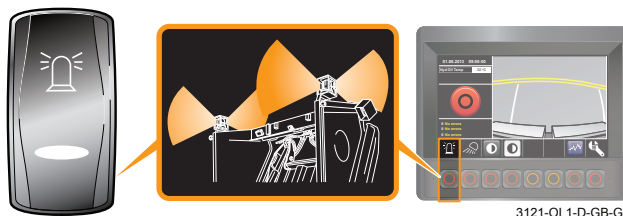
- Check that the lamps and their associated warning lamps illuminate when switched on and extinguish when switched off.

15. Operate the footbrake.

- Check that all the brake lamps illuminate when the pedal is pressed and extinguish when the pedal is released.

16. Switch on the warning beacons.

- Check that the warning beacons and their associated warning lamps operate correctly when switched on and extinguish when switched off.
- If separate cab beacon switch is fitted check that it over-rides function on cab control panel.



17. Make sure that the parking brake is applied and Neutral 'N' is selected.

18. Start the engine, check the warning panels and instrumentation for any indications of system malfunctions.

- The 'Low air pressure' warning buzzers should not be sounding.

19. Turn the 'Body main' switch on.



- The screen should display the 'Body system run' mode and 'System on' pictogram.



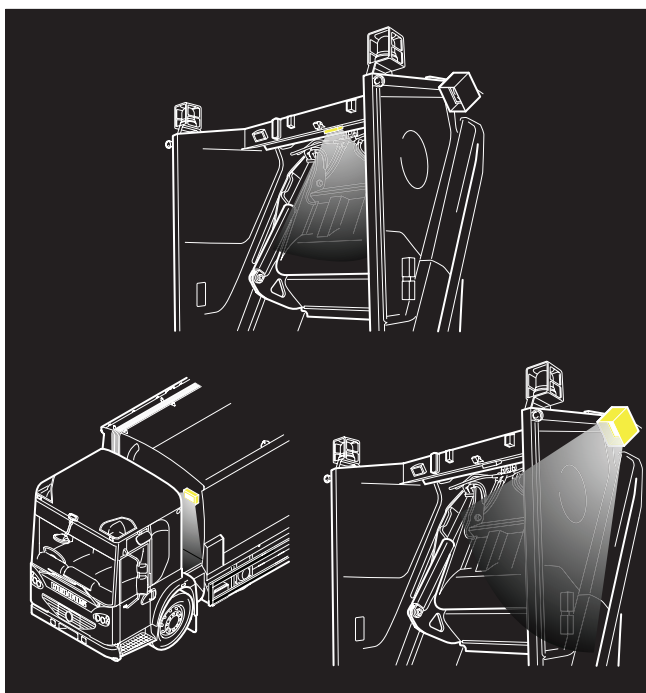
2748-DS003-OL1-D-GB-G2

- If any warning pictograms are displayed on the screen, report to supervision immediately and do not proceed any further with the daily inspection.



20. Press and release the 'Work lamp' switch.

- Check that the tailgate loading lamps and all the work lamps fitted to the vehicle illuminate.



2833-OL1-D-GB-G1

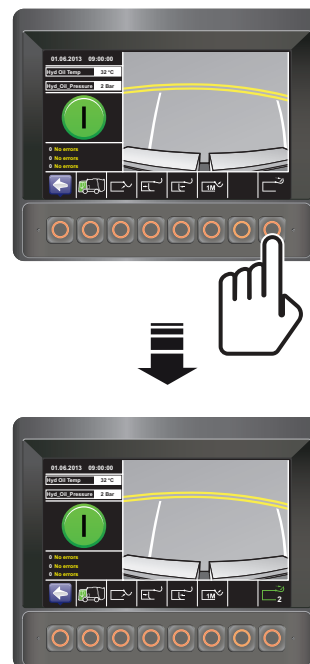
21. Press and release the 'Internal discharge controls' switch.

- The screen should display the 'Body discharge internal controls' mode.



2748-DS028-OL1-D-GB-G2

22. Check that 'Tailgate clear' pictogram is white, then press and release the switch below it one or more times so that the pictogram changes colour to green and a white number from 1 to 4 appears in the pictogram.



2748-DS046-OL1-D-GB-G1



WARNING:
MAKE SURE THAT YOU KNOW THE HEIGHT OF YOUR VEHICLE WITH THE TAILGATE AND WASTE CONTAINER LIFTING DEVICE, IF FITTED, RAISED.

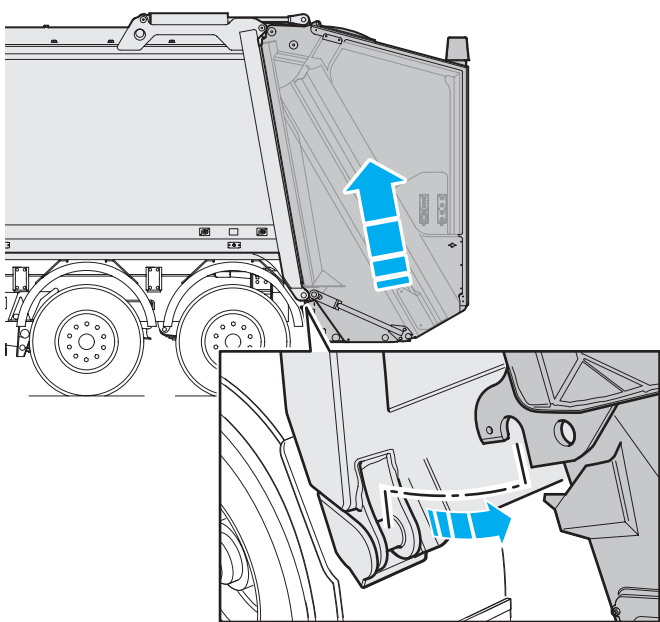


DAILY CHECKS

3

23. Press and hold the 'Tailgate raise' switch until the tailgate is just out of its locks and then release the switch.

- Tailgate should raise smoothly until it is out of the locks.
- 'Vehicle reversing' alarm should sound immediately the tailgate is out of the locks while the 'Tailgate raise' is being pressed and the tailgate is rising.



2838-OL1-D-GB-G3

- 'Tailgate out-of-locks' pictogram should display on the control panel screen when the 'Tailgate raise' switch is released.



WARNINGS:
MAKE SURE THAT YOU KNOW THE HEIGHT OF YOUR VEHICLE WITH THE TAILGATE AND WASTE CONTAINER LIFTING DEVICE, IF FITTED, RAISED.

DRIVER MUST BE IN CAB.

PARKING BRAKE MUST BE APPLIED.

ALL PERSONNEL MUST BE CLEAR OF FRONT AND REAR OF VEHICLE.

VEHICLE MAY LURCH FORWARDS.

24. Firmly apply the footbrake. Then select Drive 'D'.

- 'Tailgate out-of-locks' warning buzzer in the cab should sound immediately Drive 'D' is selected.

25. Select Neutral 'N'.

- 'Tailgate out-of-locks' warning buzzer in the cab should silence immediately Neutral 'N' is selected.

26. Press and release the return switch.

- The screen should display the 'Body system run' mode and 'Tailgate out-of-locks' pictogram.



2748-DS047-OL1-D-GB-G3



WARNING:
COMPACTION MECHANISM MAY OPERATE. MAKE SURE THAT THE TAILGATE AREA IS CLEAR OF PERSONNEL.



27. On the compaction mechanism control panel where the 'Start pack cycle' push-button is energised, press in turn the:



'Start pack cycle' push-button.

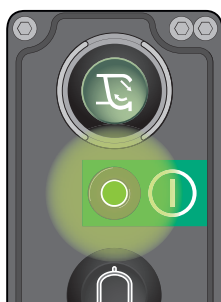
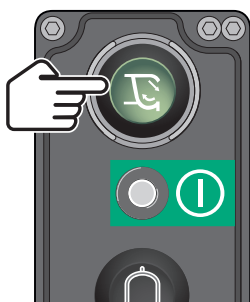


'Rescue' push-button.

2842-OL1-D-GB-G1

- Compaction mechanism should not operate.

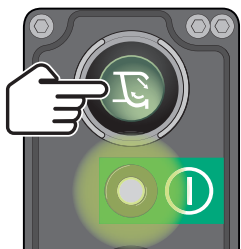
28. Press and release the de-energised 'Start pack cycle' push-button on the opposite control panel to activate it.



2773-OL1-D-GB-G1

- The green indicator lamp should illuminate.

29. Press in turn the:



'Start pack cycle' push-button.



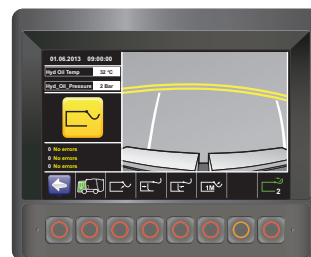
'Rescue' push-button.

2842-OL1-D-GB-G1

- Compaction mechanism should not operate.

30. Press and release the 'Internal discharge controls' switch.

- The screen should display the 'Body discharge internal controls' mode and 'Tailgate out-of-locks' pictogram.

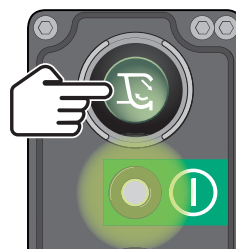


2748-DS048-OL1-D-GB-G3



WARNING:
COMPACTION MECHANISM MAY OPERATE.
MAKE SURE THAT THE TAILGATE AREA IS CLEAR OF PERSONNEL.

31. On each compaction mechanism control panel, press in turn the:



'Start pack cycle' push-button.



'Rescue' push-button.

2842-OL1-D-GB-G1

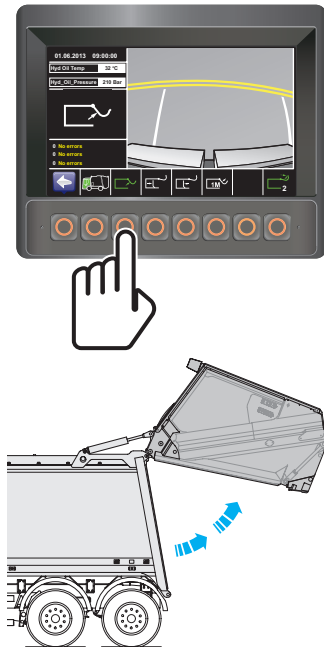
- Compaction mechanism should not operate.



WARNING:
MAKE SURE THAT YOU KNOW THE HEIGHT OF YOUR VEHICLE WITH THE TAILGATE AND WASTE CONTAINER LIFTING DEVICE, IF FITTED, RAISED.

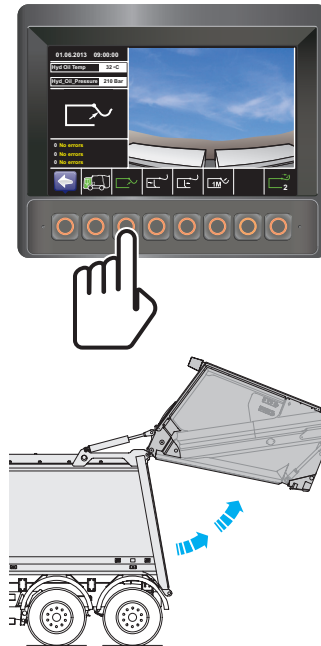


32. Press and hold the 'Tailgate raise' switch.



2844-OL1-D-GB-G3

34. Press and hold the 'Tailgate raise' switch until the tailgate is fully raised and then release the switch.



2844-OL1-D-GB-G4

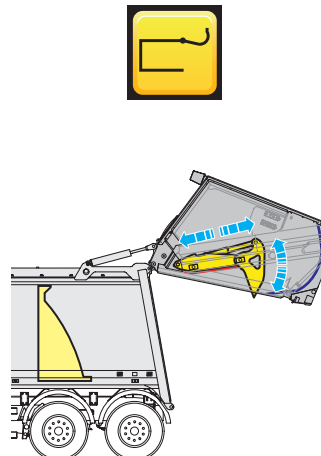
- Tailgate should rotate smoothly upwards about the hinge pins.
 - 'Vehicle reversing' alarm should sound.
33. While tailgate is rising, release the switch before it reaches its fully raised position.
- Tailgate should stop rising immediately the switch is released.
 - Tailgate should not lower.
 - 'Tailgate out-of-locks' pictogram should display on the control panel screen.

- Tailgate should resume rotating upwards about the hinge pins until fully raised when it should stop without noticeable judder.
- 'Vehicle reversing' alarm should sound while the 'Tailgate raise' switch is being pressed and the tailgate is rising.
- When the tailgate is raised, the 'Tailgate fully raised' pictogram should display on the control panel screen.



2748-DS049-OL1-D-GB-G2

- 'Vehicle reversing' alarm should silence.



2846-OL1-D-GB-G1



- Immediately the tailgate reaches full height, the compaction mechanism should complete the number of full cycles shown by the white number in the tip clear pictogram, i.e. packer plate open, carriage plate down, packer plate close and then carriage plate up, in one continuous sequence until fully packed when it should stop.



WARNINGS:
MAKE SURE THAT YOU KNOW THE HEIGHT OF YOUR VEHICLE WITH THE TAILGATE AND WASTE CONTAINER LIFTING DEVICE, IF FITTED, RAISED.

DRIVER MUST BE IN CAB.

PARKING BRAKE MUST BE APPLIED.

ALL PERSONNEL MUST BE CLEAR OF FRONT AND REAR OF VEHICLE.

VEHICLE MAY LURCH FORWARDS.

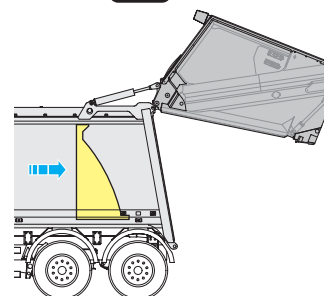
35. Firmly apply the footbrake. Then select Drive 'D'.

- 'Tailgate out-of-locks' warning buzzer in the cab should sound immediately Drive 'D' is selected.

36. Select Neutral 'N'.

- 'Tailgate out-of-locks' warning buzzer in the cab should silence immediately Neutral 'N' is selected.

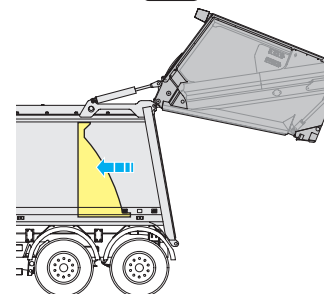
37. Press the eject switch. Release the switch when the ejection plate has reached the end of its travel.



2847-OL1-D-GB-G2

- Ejection plate should eject smoothly without judder.

38. Press the retract switch. Release the switch when the ejection plate has reached the end of its travel.



2848-OL1-D-GB-G2

- Ejection plate should retract smoothly without judder.
- The body full pictogram should display on the cab control panel screen.

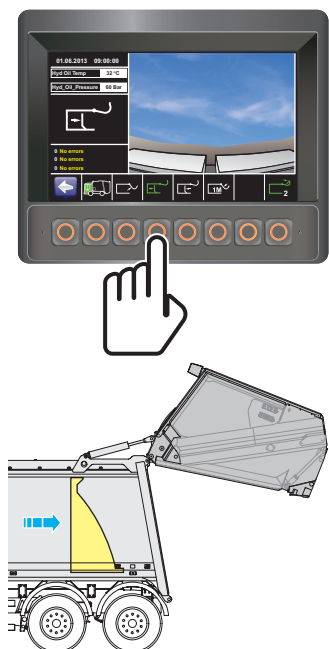




DAILY CHECKS

3

39. Press the eject switch. Release the switch when the ejection plate has reached the end of its travel.



2847-OL1-D-GB-G2



WARNING:
MAKE SURE THAT THE TAILGATE AREA IS CLEAR OF PERSONNEL.

40. Press each of the two push-buttons on the 'Tailgate lowering' control panel separately.

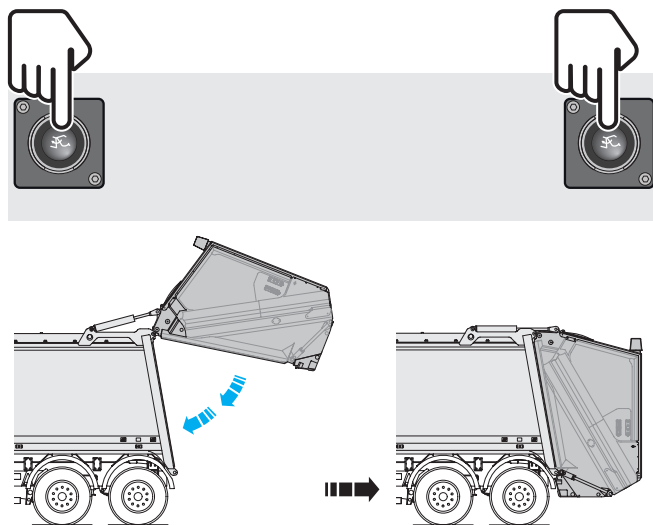


2450-OT1-D-GB-G1

- Tailgate should not lower.

41. Press the two push-buttons on the 'Tailgate lowering' control panel simultaneously.

- Tailgate should lower smoothly without judder.



2850-OL1-D-GB-G1

- 'Vehicle reversing' alarm should sound.
- The engine speed should lower to tick-over.

42. While tailgate is lowering, release one of the push-buttons but keep the other push-button depressed.



2852-OL1-D-GB-G1

- Tailgate should stop lowering immediately the push-button is released.
- Tailgate should not lower.
- 'Tailgate out-of-locks' pictogram should display on the control panel screen.



- 'Vehicle reversing' alarm should silence.

43. While keeping the push-button depressed, press the released push-button again.

- Tailgate should remain stationary.
- 'Tailgate out-of-locks' pictogram should continue to display on the control panel screen.

Release both push-buttons.



44. Press the two push-buttons on the 'Tailgate lowering' control panel simultaneously until the tailgate engages locks and then release the push-buttons.



2387-OT1-D-GB-G1

- Tailgate should rotate smoothly downwards about the hinge pins until it engages face of body, then lower into locks.
- 'Vehicle reversing' alarm should sound until the tailgate engages locks when it should silence.
- 'System on' pictogram should display when the tailgate engages locks.



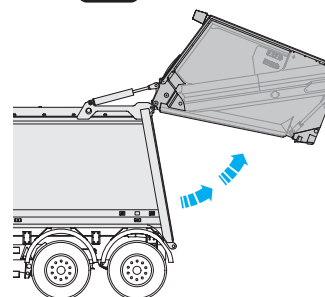
2748-DS050-OL1-D-GB-G2

45. Press the 'Tip clear' switch until the pictogram changes colour to white without any number beside it.



2748-DS037-OL1-D-GB-G2

46. Press and hold the 'Tailgate raise' switch until the tailgate is fully raised and then release the switch.



2854-OL1-D-GB-G3

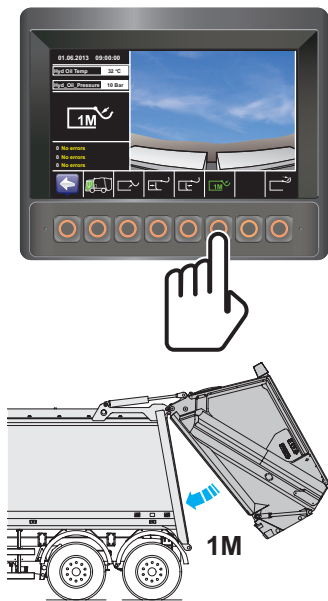
- Tailgate should raise until fully raised when it should stop without noticeable judder.
- 'Vehicle reversing' alarm should sound while tailgate is rising.
- 'Tailgate raised' pictogram should display on the control panel screen.
- Immediately the tailgate reaches full height, the compaction mechanism should not operate.



DAILY CHECKS

3

47. Press and hold the 'Lower tailgate to 1 metre' switch until the tailgate stops lowering and then release the switch.

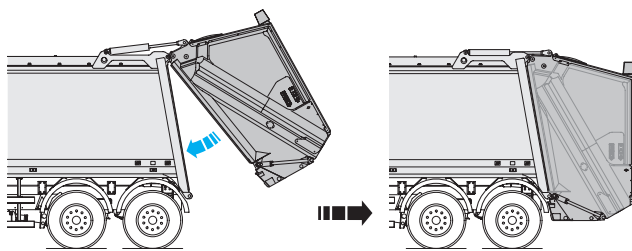
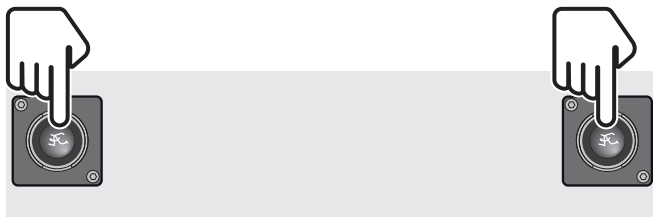


2856-OL1-D-GB-G2

- Tailgate should rotate smoothly downwards about the hinge pins until it is 1 metre from the body when it should stop without noticeable judder.
- 'Vehicle reversing' alarm should sound while tailgate is lowering.
- 'Tailgate out-of-locks' pictogram should display on the control panel screen.



48. Press the two push-buttons on the 'Tailgate lowering' control panel simultaneously until the tailgate engages locks and then release the push-buttons.



2860-OL1-D-GB-G1

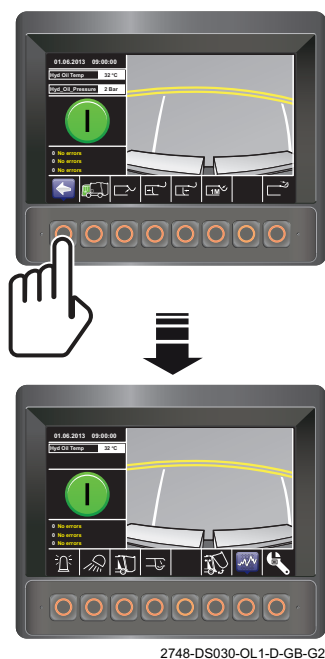
- Tailgate should rotate smoothly downwards about the hinge pins until it engages face of body, then lower into locks.
- 'Vehicle reversing' alarm should sound until the tailgate engages locks when it should silence.
- 'System OK' pictogram should display when the tailgate engages locks.



2748-DS004-OL1-D-GB-G2



49. Press and release the return switch.



- The screen should display the 'Body system run' mode and 'System on' pictogram.



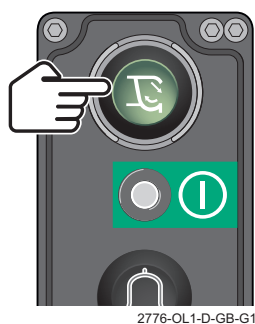
**WARNINGS:
DRIVER MUST BE IN CAB.**

PARKING BRAKE MUST BE APPLIED.

**ALL PERSONNEL MUST BE CLEAR OF
FRONT AND REAR OF VEHICLE.**

50. Select Drive in the cab.

51. Press 'Start pack cycle' push-button on compaction mechanism control panel.



- Compaction mechanism should not operate.

52. Select Neutral.

For each compaction mechanism control panel, carry out the following operations (53 - 57):

53. Check that pack cycle operates correctly according to variant.

Vehicles fitted with a closed waste container lifting device.

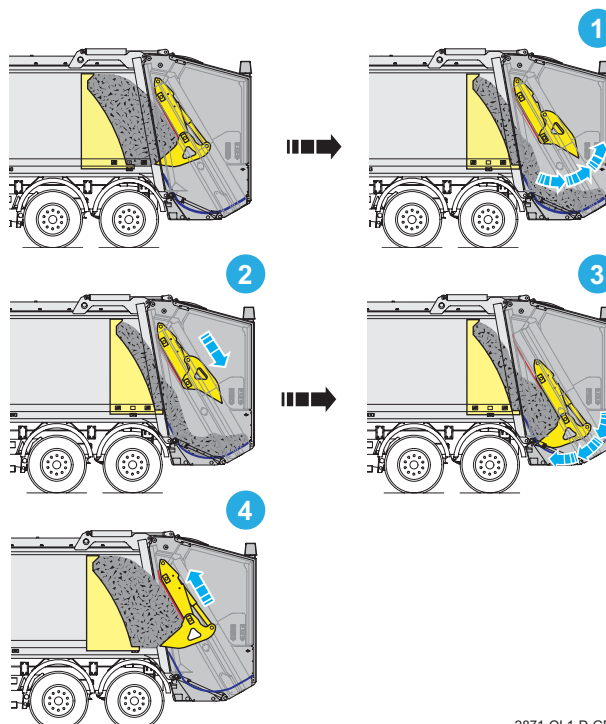
Vehicles fitted with an open waste container lifting device and guide plate in raised position.

Vehicles fitted with an open waste container lifting device and a fixed extended rave rail.

Energise each 'Start pack cycle' push-button in turn and then press and release the 'Start pack cycle' push-button.



- Green LED below push-button should be illuminated.
- Compaction mechanism packer plate should open (1), carriage plate and packer plate should move downwards (2), packer plate should close (3), carriage plate and packer plate should move upwards (4) and automatically stop in the packed position.



2871-OL1-D-GB-G1



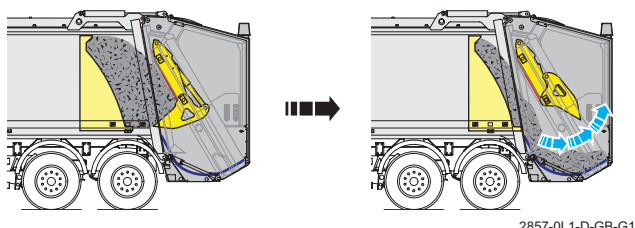
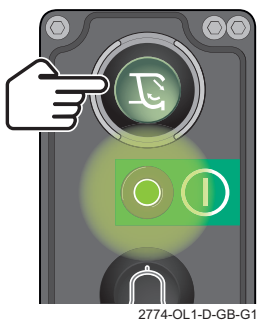
DAILY CHECKS

Open System vehicles (no waste container lifting device fitted).

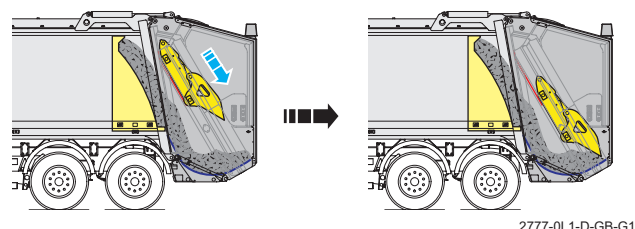
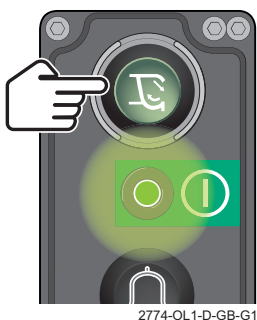
Vehicles fitted with an open waste container lifting device and guide plate in lowered position.

54. Press and release the 'Start pack cycle' push-button.

- Packer plate should open and then stop.



55. Press and hold the 'Start pack cycle' push-button.



- Carriage plate and packer plate should move downwards.

Release the push-button while the carriage plate and packer plate are moving downwards.

- Carriage plate and packer plate should stop immediately.

56. Press and hold the 'Start pack cycle' push-button again.

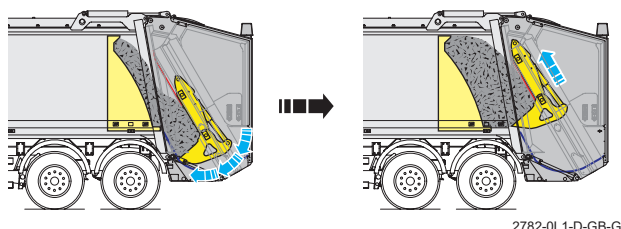
- Carriage plate and packer plate should continue to move fully downwards from stopped position and then stop when carriage plate fully lowered.

57. Press and hold the 'Start pack cycle' push-button again.

- The packer plate should close.

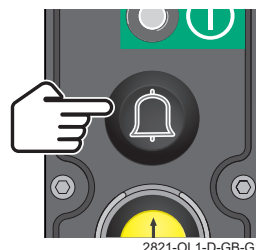
Release the push-button after the packer plate has started to close.

- Packer plate should automatically close and then the carriage plate and packer plate should move upwards until the compaction mechanism is fully packed when it should stop.



58. Press the 'Signal' push-button.

- 'Tailgate signal' buzzer in the cab should sound immediately the push-button is pressed and silence immediately the push-button is released.



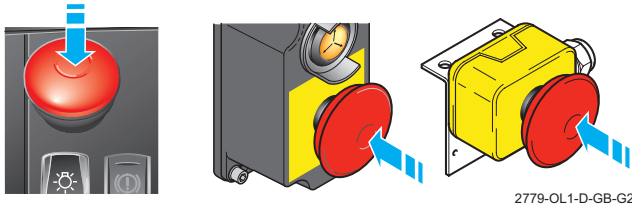
- The 'Signal' warning pictogram should display on the control panel screen while the button is pressed.





For each 'Emergency stop' push-button:

- Cab control panel (x 1)
- Compaction mechanism control panel (x 2)
- Rave rail or waste container lifting device (x 2)



Carry out the following operations (59 - 67):

59. Press a 'Start pack cycle' push-button, to operate the compaction mechanism so that carriage plate is moving upwards.



While the carriage plate is moving upwards, press the 'Emergency stop' push-button.



- Compaction mechanism should stop immediately.
- 'Emergency stop' warning buzzer in the cab should sound.
- 'Emergency stop operated' pictogram should display in the control panel screen.

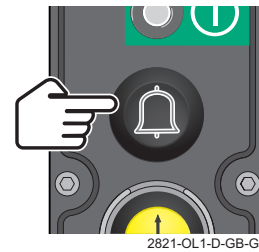


60. On each compaction mechanism control panel, press in turn the:

'Start pack cycle' push-button.

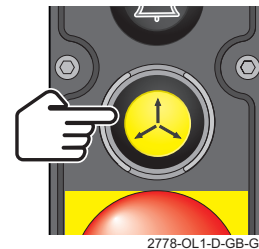


- Compaction mechanism **should not operate.**
- 'Signal' push-button.



- 'Tailgate signal' buzzer in the cab **should not sound.**

'Rescue' push-button.

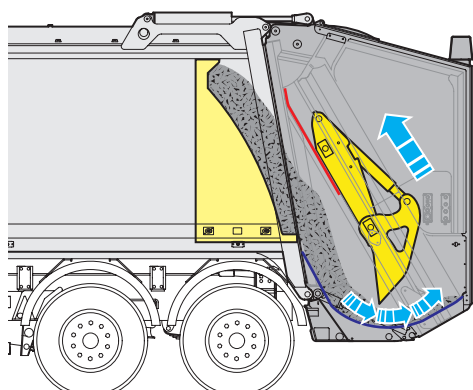




DAILY CHECKS

3

- Packer plate should open and carriage plate move upwards simultaneously until it is fully open and fully unpacked.

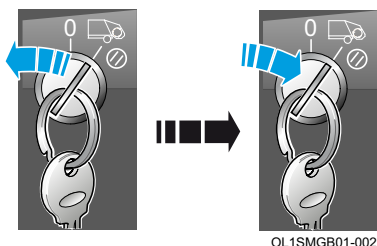


2855-OL1-D-GB-G1

- The 'Rescue' warning pictogram should display on the control panel screen.



61. Turn the 'Body main' switch off and then on again.

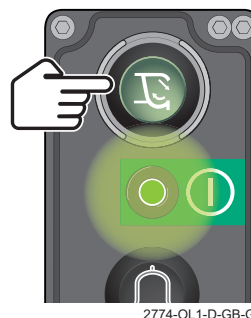


62. Pull the 'Emergency stop' push-button outwards.



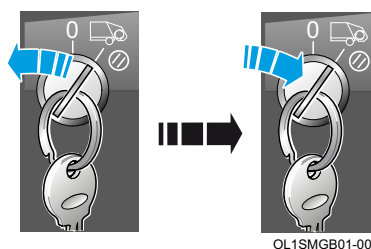
- 'Emergency stop' warning buzzer in the cab should silence.

63. Press the 'Start pack cycle' push-button.

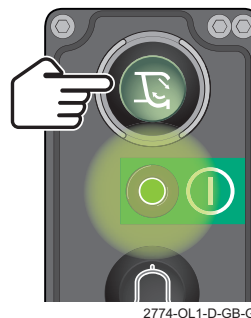


- Compaction mechanism **should not operate**.

64. Turn the 'Body main' switch off and then on again.



65. Press the 'Start pack cycle' push-button.



- Check that the compaction mechanism restarts and operates to specification.

66. Turn the 'Body main' switch to Off position. Remove and retain the key.



67. Open the body access door.



68. Insert the key into the 'Body main' switch and turn it to Run.

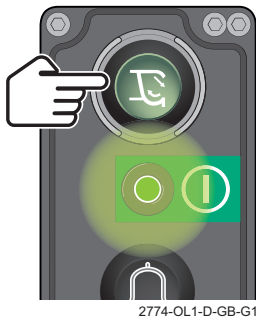


- 'Body access door open' warning pictogram should display in the control panel screen.

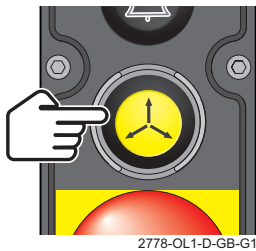


69. On each compaction mechanism control panel, press in turn the:

'Start pack cycle' push-button twice.



'Rescue' push-button.



- Compaction mechanism **should not operate**.

70. Press and release the 'Internal discharge controls' switch.

- The screen should display the 'Body discharge internal controls' mode.
- 'Body access door open' pictogram should continue to display on the control panel screen.



2748-DS052-OL1-D-GB-G2



WARNING:
COMPACTION MECHANISM MAY OPERATE. MAKE SURE THAT THE TAILGATE AREA IS CLEAR OF PERSONNEL.



WARNING:
MAKE SURE THAT YOU KNOW THE HEIGHT OF YOUR VEHICLE WITH THE TAILGATE AND WASTE CONTAINER LIFTING DEVICE, IF FITTED, RAISED.

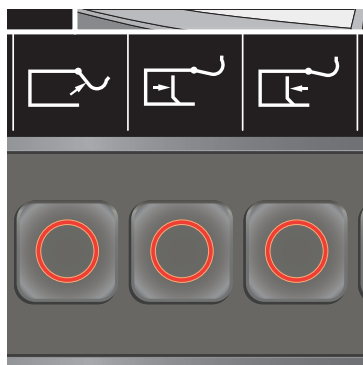




DAILY CHECKS

3

71. Press and hold in turn the tailgate raise, ejection plate eject and retract switches.
- Tailgate raise, ejection plate eject and ejection plate retract functions should not operate.



2748-DS051-OL1-D-GB-G2

72. Turn the 'Body main' switch to Off position. Remove and retain the key.

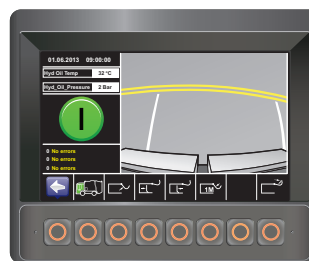
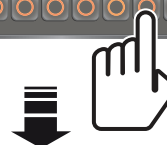


73. Close and lock the body access door.
74. Insert the key into the 'Body main' switch and turn it to Run.



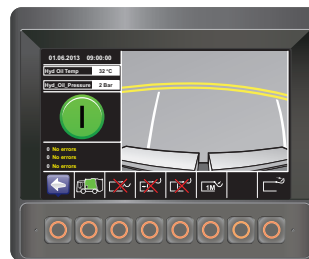
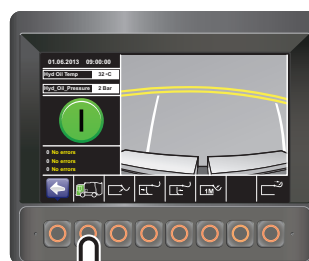
On vehicles fitted with an external discharge control panel carry out the following operations (75-83):

75. Press and release the 'Internal discharge controls' switch.
- The screen should display the 'Body discharge internal controls' mode.



2748-DS028-OL1-D-GB-G2

76. Press and release the 'External discharge controls' switch.
- The screen should display the 'Body discharge external controls' mode.



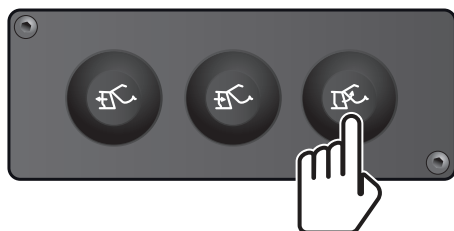
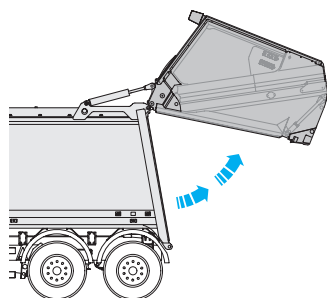
2748-DS031-OL1-D-GB-G2



WARNING:
MAKE SURE THAT YOU KNOW THE HEIGHT OF YOUR VEHICLE WITH THE TAILGATE AND WASTE CONTAINER LIFTING DEVICE, IF FITTED, RAISED.

77. Press the 'Tailgate raise' push-button.

- Tailgate should raise smoothly until out-of-locks and then rotate smoothly upwards about the hinge pins.
- 'Vehicle reversing' alarm should sound immediately the tailgate is out-of-locks and while tailgate is rising.



2867-OL1-D-GB-G1

- 'Tailgate out-of-locks' pictogram should display on the control panel screen.



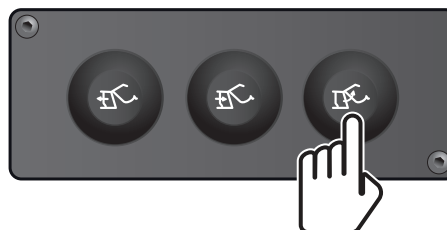
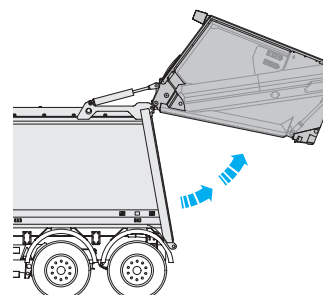
78. While tailgate is rising, release push-button before it reaches its fully raised position.

- Tailgate should stop rising immediately the switch is released.
- Tailgate should not lower.
- 'Tailgate out-of-locks' pictogram should continue to display on the control panel screen.



79. Press the 'Tailgate raise' push-button until the tailgate is fully raised and then release the push-button.

- Check that the tailgate resumes rotating upwards about the hinge pins until fully raised when it should stop without noticeable judder.
- 'Vehicle reversing' alarm should sound while 'Tailgate raise' push-button is pressed and tailgate is rising.



2867-OL1-D-GB-G1

80. When the tailgate is raised, the 'Tailgate fully raised' pictogram should display on the control panel screen.



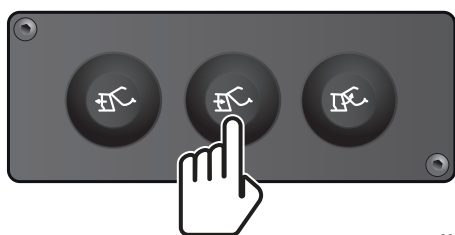
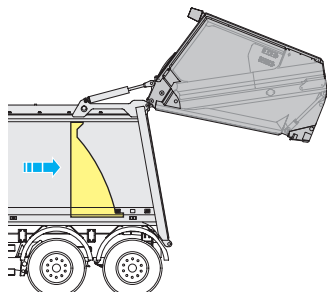


DAILY CHECKS

3

81. Press the 'Ejection plate eject' push-button. Release the push-button when the ejection plate has reached the end of its travel.

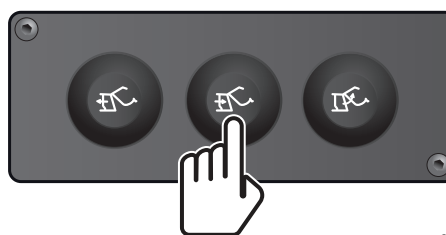
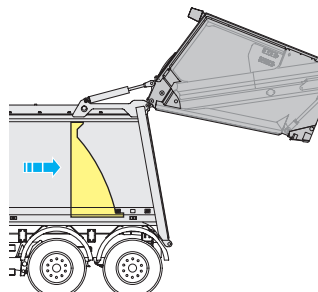
- Ejection plate should eject smoothly without judder.



2868-OL1-D-GB-G1

83. Press the 'Ejection plate eject' push-button. Release the push-button when the ejection plate has reached the end of its travel.

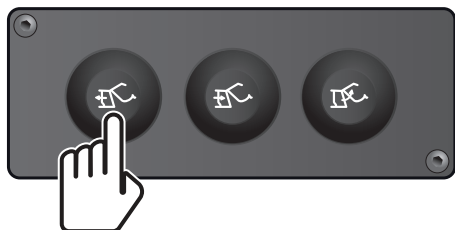
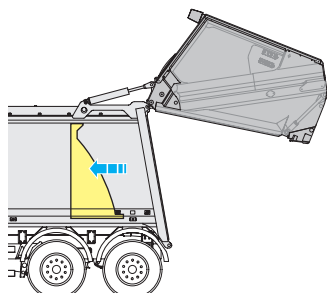
- Ejection plate should eject smoothly without judder.



2868-OL1-D-GB-G1

82. Press the 'Ejection plate retract' push-button. Release the push-button when the ejection plate has reached the end of its travel.

- Ejection plate should retract smoothly without judder.



2869-OL1-D-GB-G1

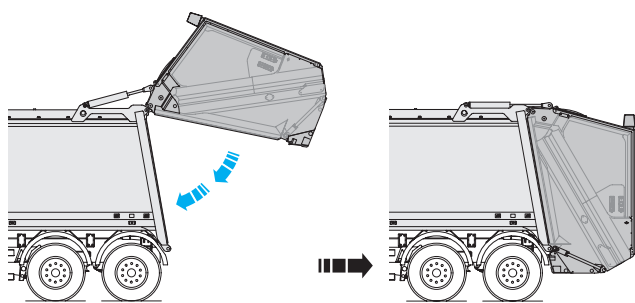
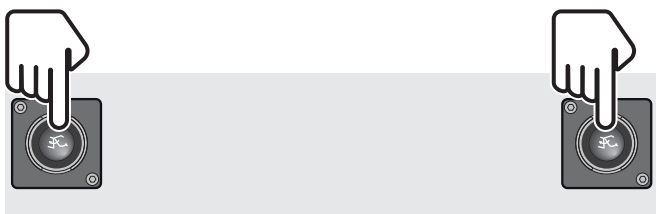


WARNING:
MAKE SURE THAT THE TAILGATE AREA IS CLEAR OF PERSONNEL.



84. Press the two push-buttons on the 'Tailgate lowering' control panel simultaneously until the tailgate engages locks and then release the push-buttons.

- Tailgate should rotate smoothly downwards about the hinge pins until it engages face of body, then lower into locks.



2850-OL1-D-GB-G1

- 'Vehicle reversing' alarm should sound until the tailgate engages locks when it should silence.
- The engine speed should lower to tick-over.
- 'System on' pictogram should display when the tailgate engages locks.



2748-DS005-OL1-D-GB-G2

85. Check level of oil in hydraulic oil tank and top up if required (see '4.1 To check hydraulic system oil level' on page 4-3).



DAILY CHECKS

3.2 Daily safety check - safety light curtain

The following check should be carried out in addition to Daily safety checks for the waste container lifting device.

1. Energise the control panels.
2. Check that the tailgate area is clear.
3. Check the status indicator lamps in each light emitter/ receiver column (see Fig. 3-1, 1).

 - A group of 5 green lights and a single green light should be visible.

4. Observe the status indicator lights and place a suitable soft object into the light curtain.

 - The green lights should extinguish and a single red light should illuminate.

5. Remove the soft object from the light curtain.
6. Press and release the 'Start pack cycle' push-button.

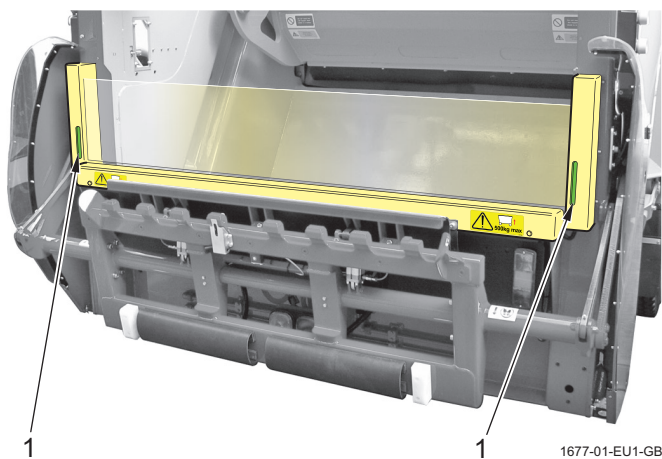
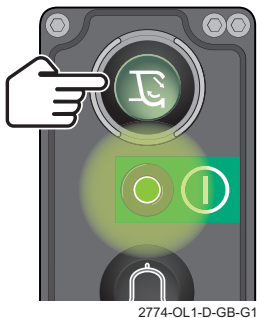


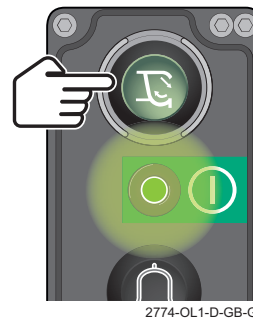
Fig. 3-1 Safety light curtain status indicator lamps

7. While the packer plate is closing and the carriage plate is moving upwards, place a suitable soft object into the light curtain.

 - The mechanism should continue to operate and complete the packing cycle.

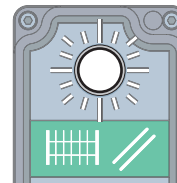
8. Remove the soft object from the light curtain.

9. Press and release the 'Start pack cycle' push-button.

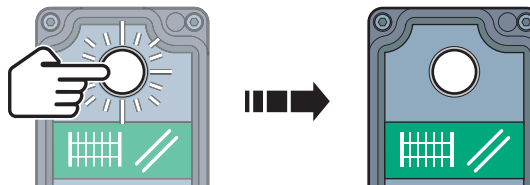


10. As the carriage plate is moving downwards, place a suitable soft object into the light curtain.

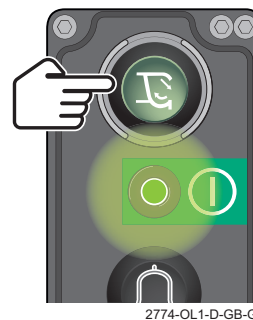
 - The compaction mechanism should stop immediately.
 - The 'Safety light curtain reset' push-button should flash.



11. Remove the soft object from the light curtain.
12. Press and release the 'Light curtain reset' push-button.



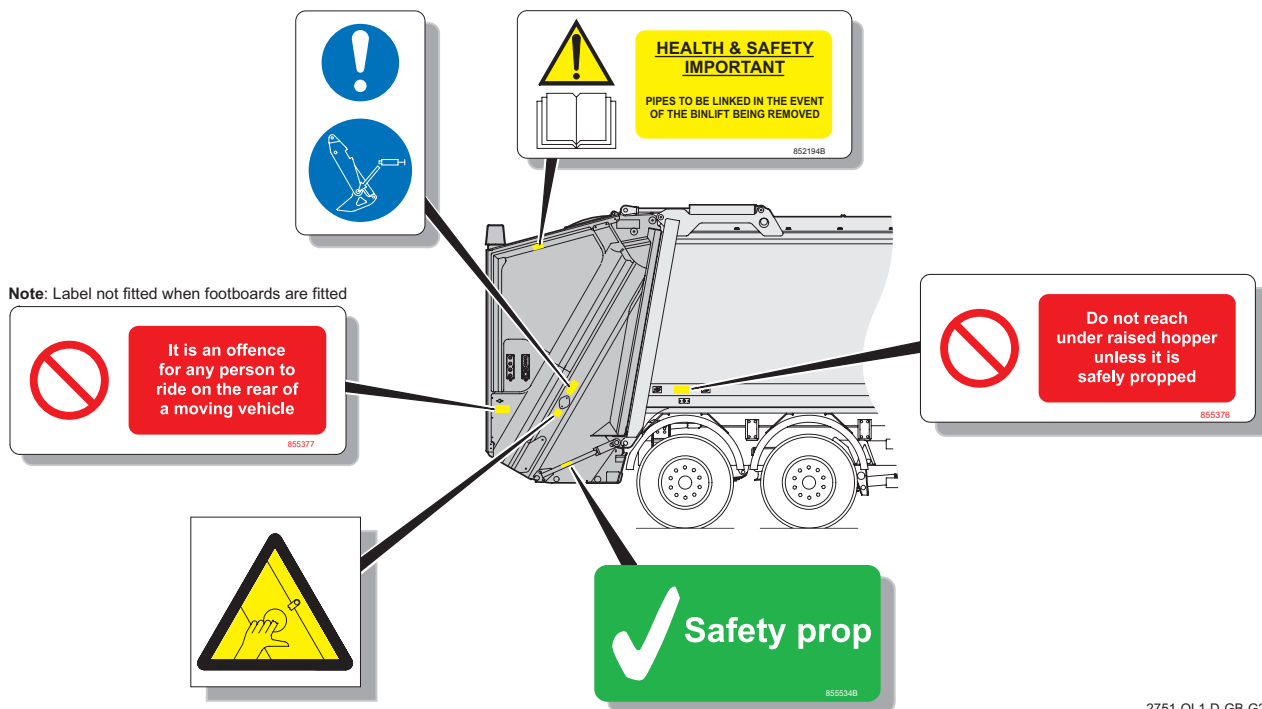
13. Press and release the 'Start pack cycle' push-button.



- The cycle should now complete automatically.

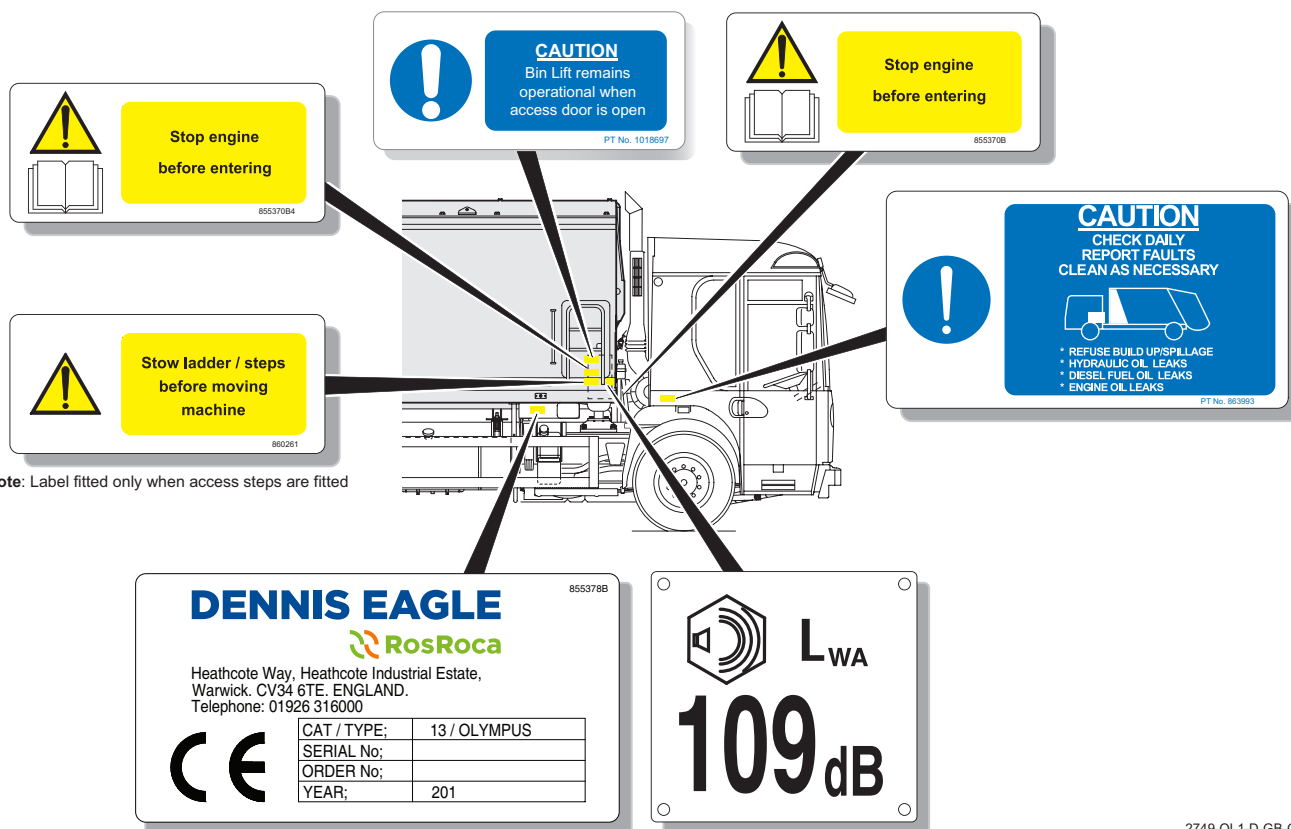


3.3 Warning labels



2751-OL1-D-GB-G2

Fig. 3-2 Warning labels; right-hand rear of refuse collection bodywork



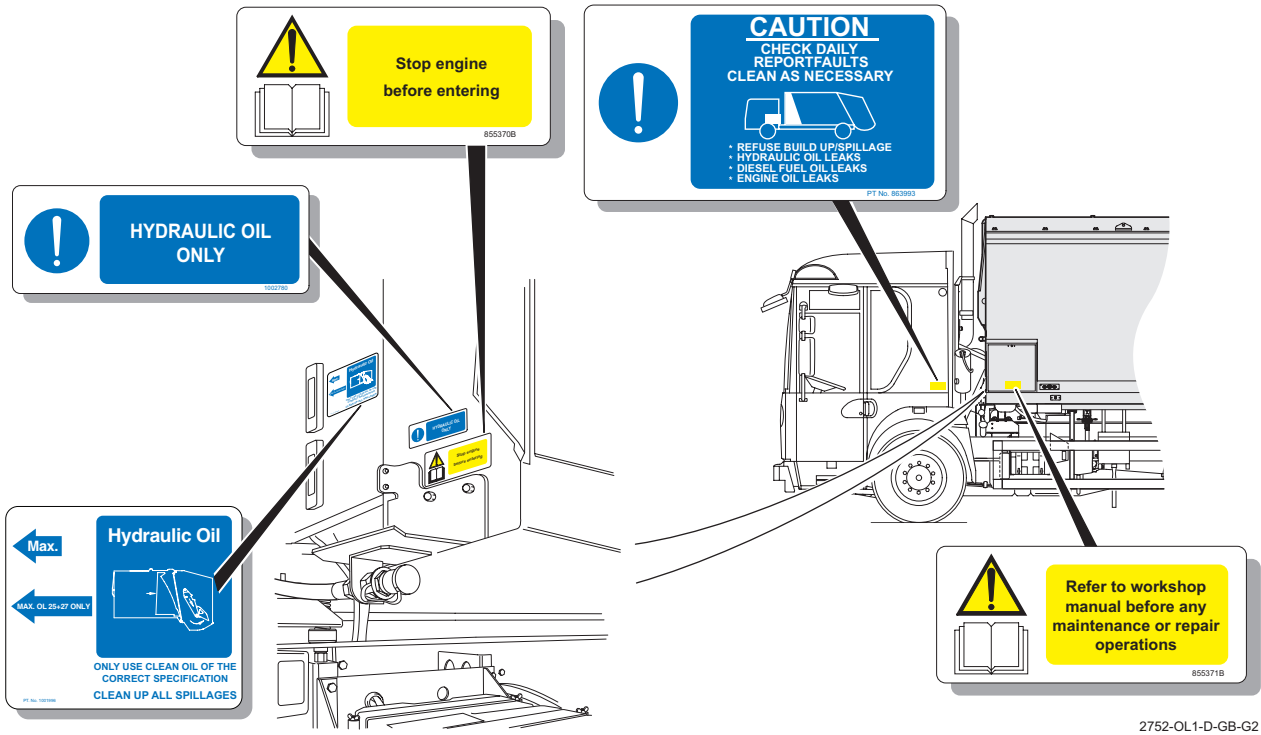
2749-OL1-D-GB-G2

Fig. 3-3 Warning labels; right-hand front of refuse collection bodywork



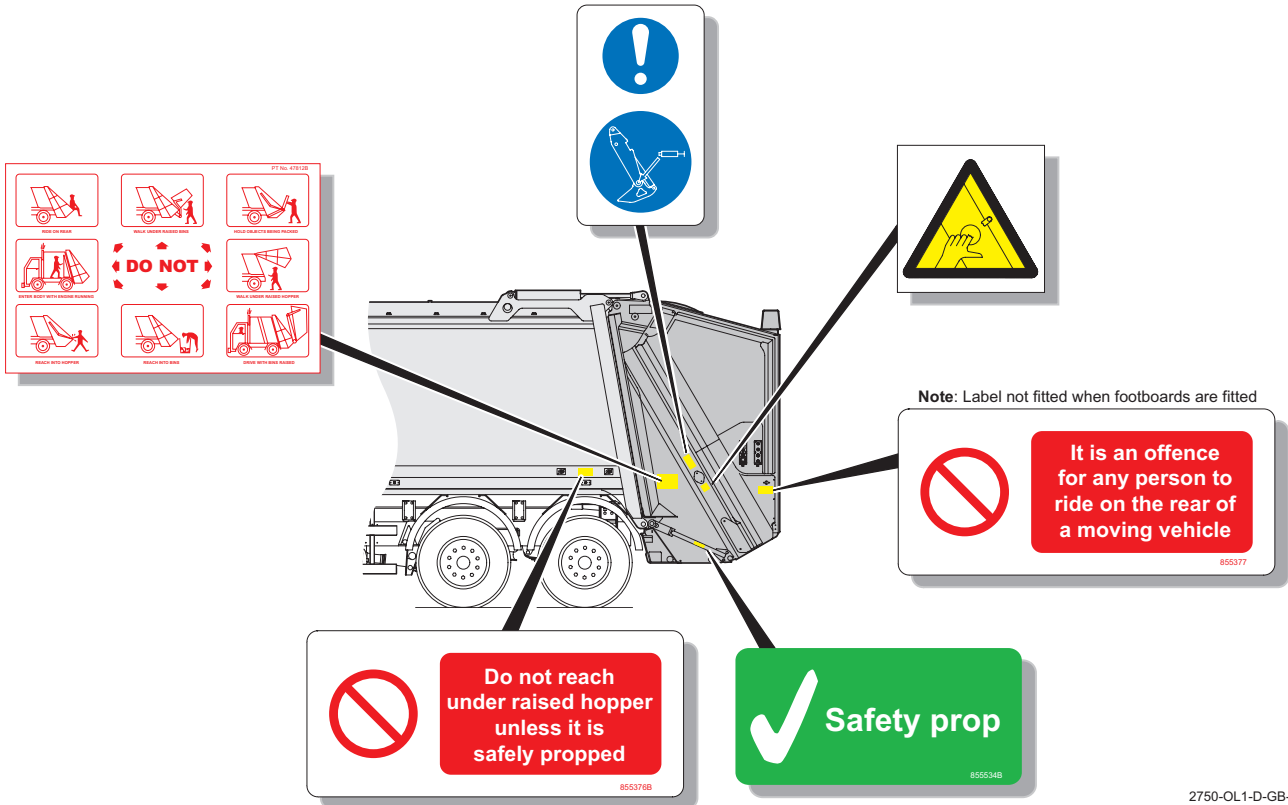
DAILY CHECKS

3



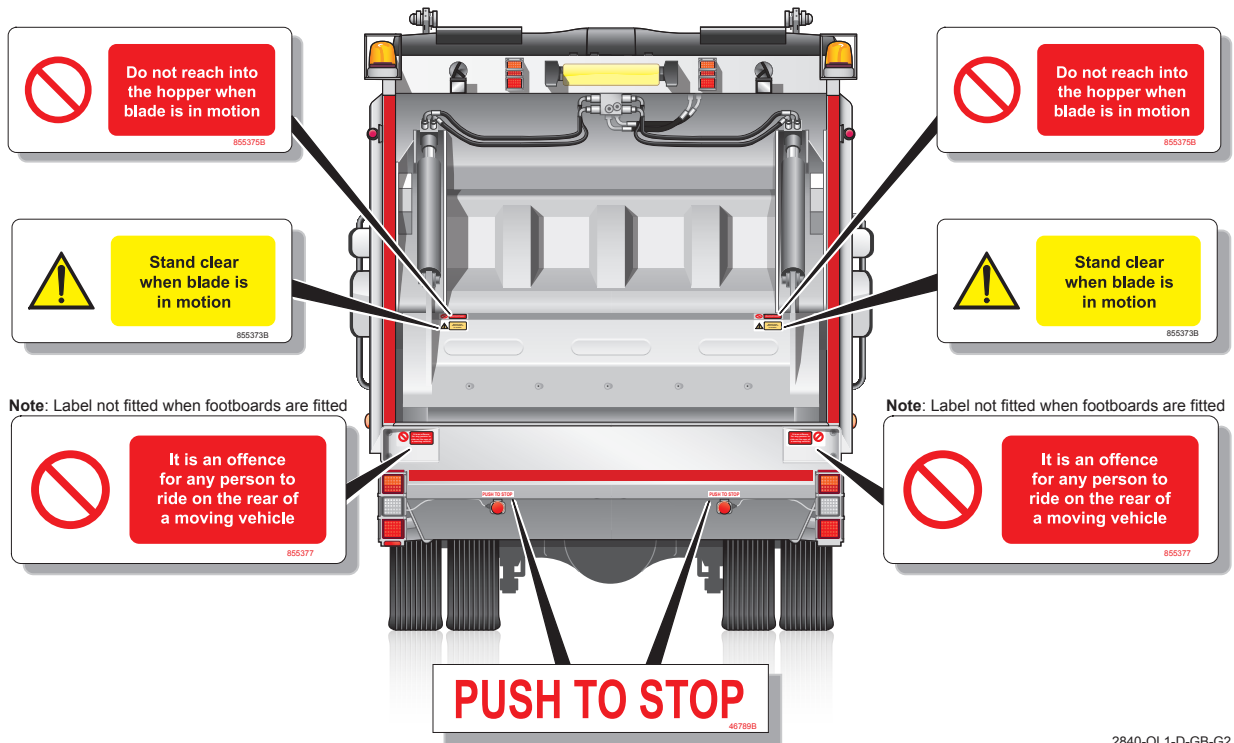
2752-OL1-D-GB-G2

Fig. 3-4 Warning labels; left-hand front of refuse collection bodywork



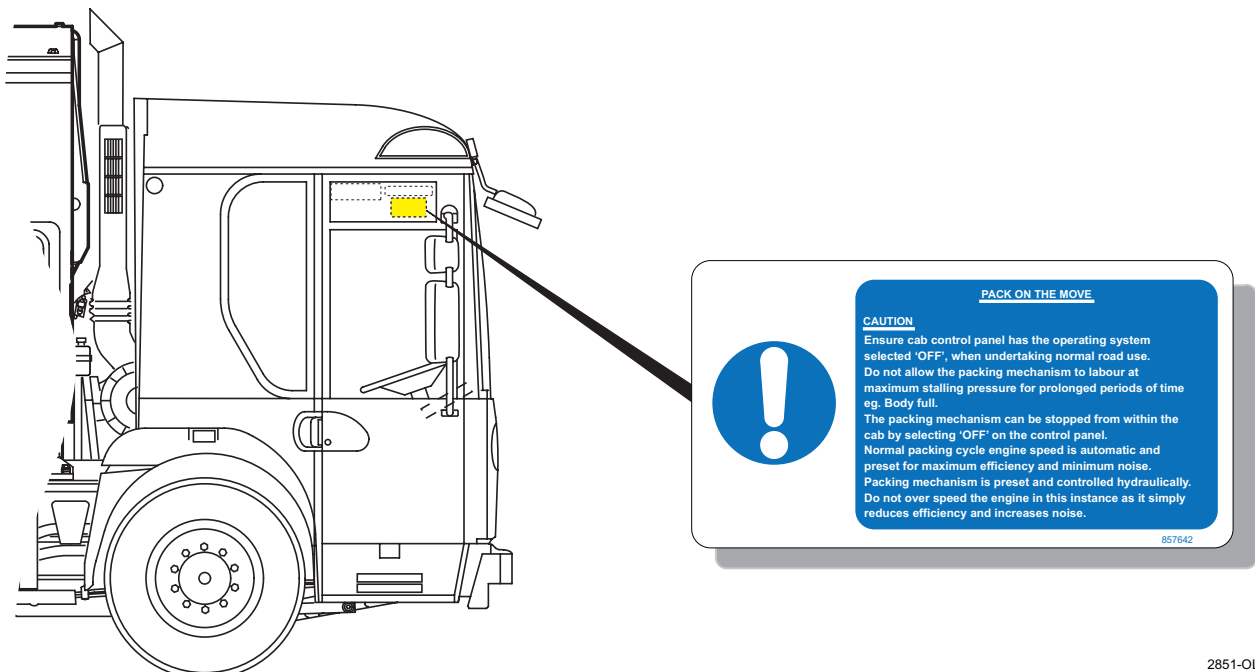
2750-OL1-D-GB-G2

Fig. 3-5 Warning labels; left-hand rear of refuse collection bodywork



2840-OL1-D-GB-G2

Fig. 3-6 Warning labels; rear of collection bodywork



2851-OL1-D-GB-G1

Fig. 3-7 Warning labels; cab